

Energy cup Instruction



1.Principle

Energy Cup scan and detect the items (such as water,medicine ,food,etc)through light waves and magnetic field analysis,and then analysis the energy and magnetic field data which item itself exists.

2. Effect

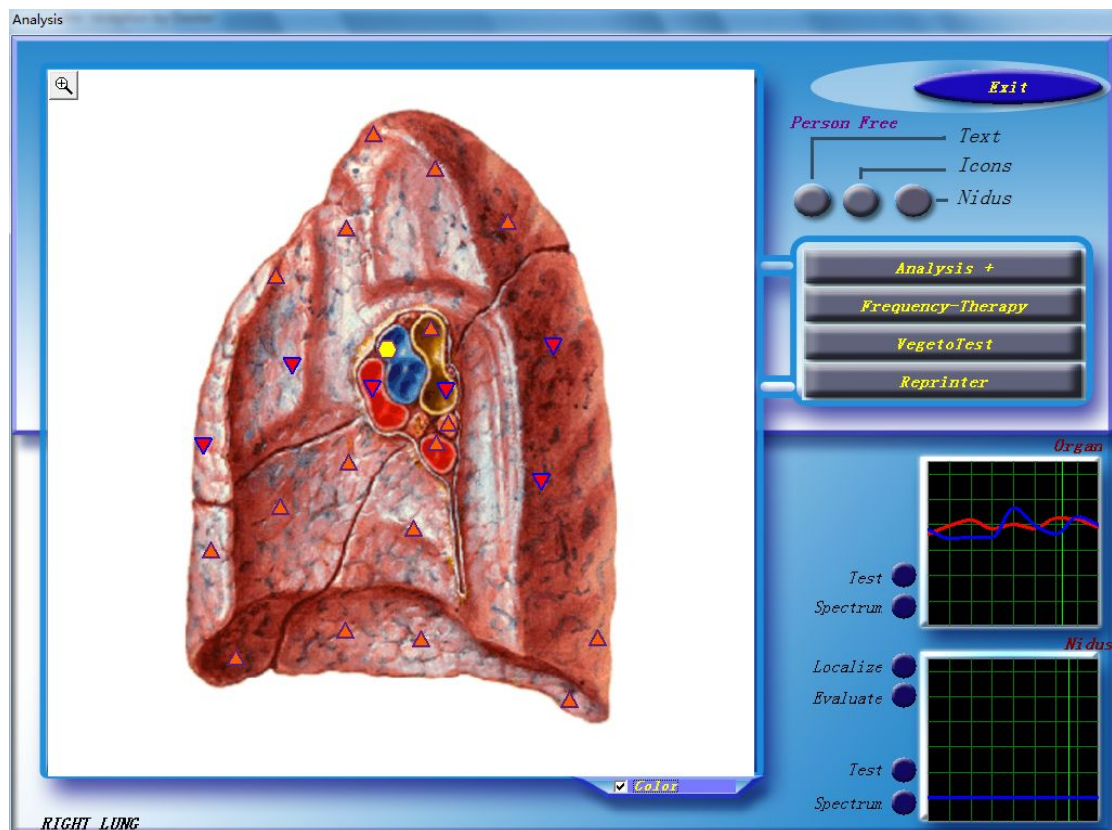
Analysis the energy which item itself exists through wave and magnetic and the magnetic field data then in combination with human test data within 3D-NLS software can effectively draw a human body to adapt to,absorb,fitment.

3.Use

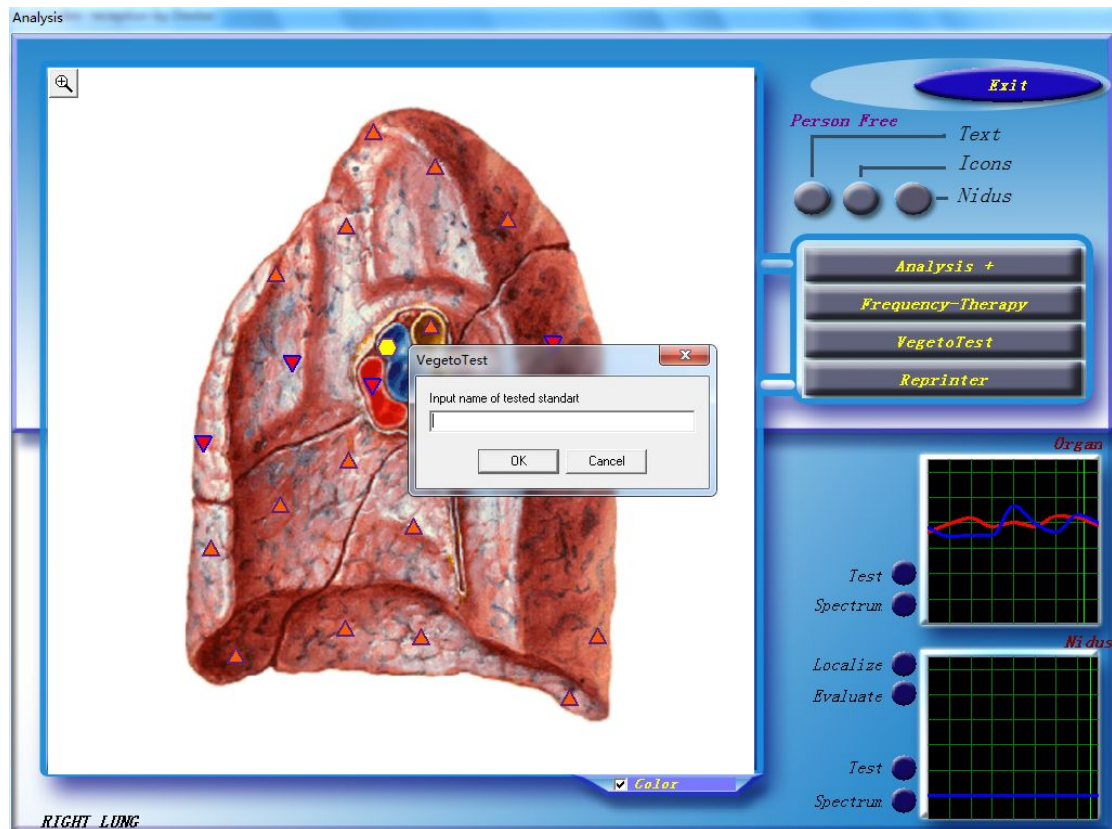
- Energy connect to the 3D-NLS host



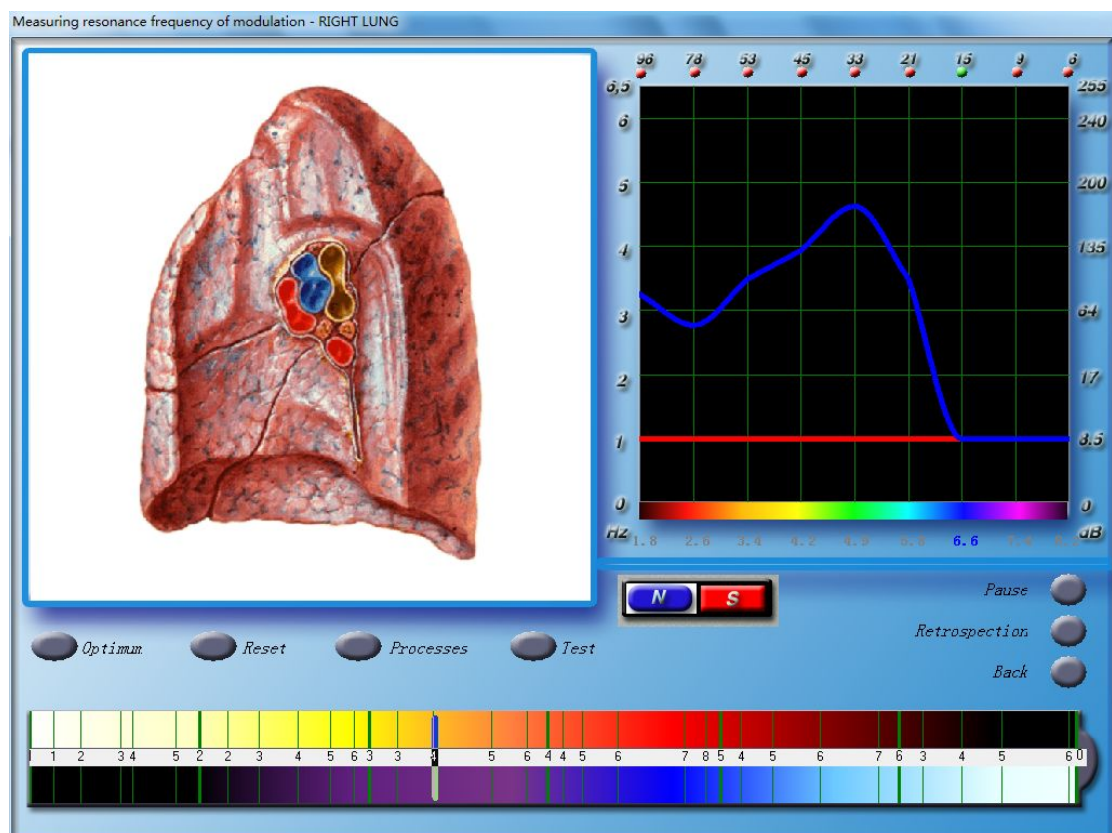
Software enter the interface of the energy cup



- Put the tested items (such as water ,medicine,ect) into the disposable cups.
- Operating the software testing and input the item name.



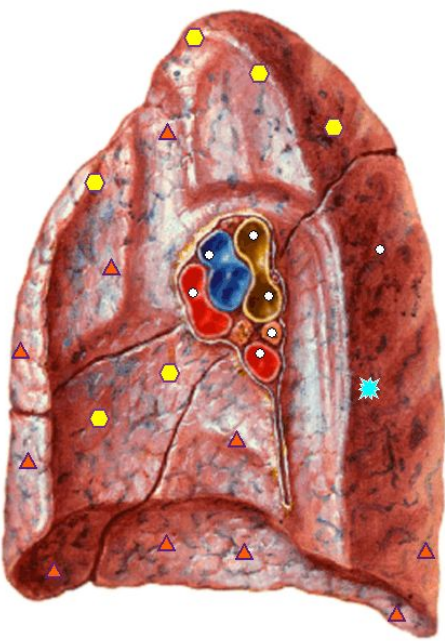
● Operating the software



● Get the results

Scanning

RIGHT LUNG



☐ Color

Topology

N	Spin	S	Spin
F = 4.2		F = 5.2	
Q = 44.8		Q = 21.5	

Major spin ●

Location **Show**

☐ Point ☐ Nidi

☐ Outline ☐ Text

☐ Remarks ☐ Icons

Start Location

Retrospection Reset

Delete selected

Delete last

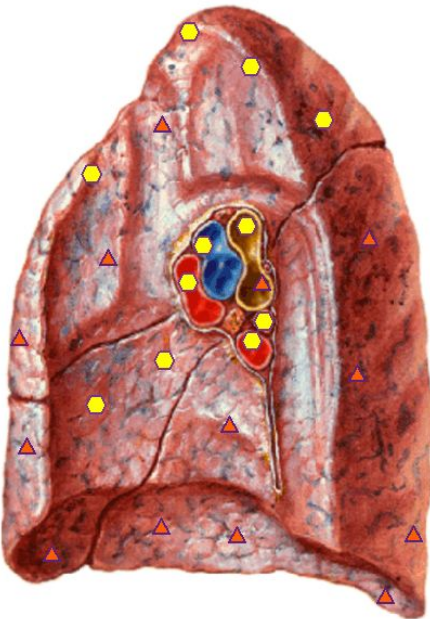
1 2 3

4 5 6

Nidus evaluation Pause

Back Card-index

Analysis



☐ Color

RIGHT LUNG water

Exit

VegetoTest

Text

Icons

Nidus

Analysis +

Frequency-Therapy

VegetoTest

Reprinter

Organ

Test

Spectrum

Nidus

Localize

Evaluate

Test

Spectrum